

PERF-O GRIP PLANK

HADCO
OUR SERVICE - YOUR SUCCESS

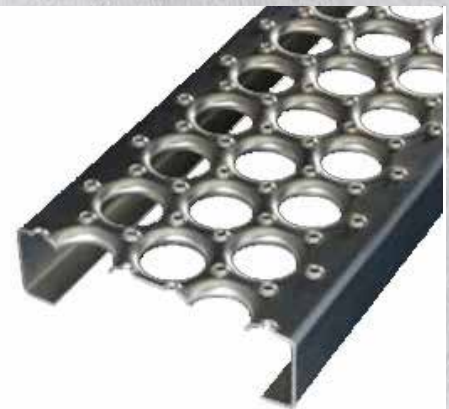


2 Hole Perf-O Grip Plank

Width: 5" inches
Height: 1-1/2" inch and 2" inch
Length: 12' feet
Carbon Steel Hot Rolled Oiled and Pickled 11 Gauge .1196" inch thickness and 13 gauge .0897" thickness.
Galvanized steel 11 Gauge .1233" thickness and 13 Gauge .0934" inch thickness

3 Hole Perf-O Grip Plank

Width: 7" inches
Height: 1-1/2" inch and 2" inch
Length: 12' feet
Carbon Steel Hot Rolled Oiled and Pickled 11 Gauge .1196" inch thickness and 13 gauge .0897" thickness.
Galvanized steel 11 Gauge .1233" thickness and 13 Gauge .0934" inch thickness



5 Hole Perf-O Grip Plank

Width: 10" inches
Height: 1-1/2" inch and 2" inch
Length: 12' feet
Carbon Steel Hot Rolled Oiled and Pickled 11 Gauge .1196" inch thickness and 13 gauge .0897" thickness.
Galvanized steel 11 Gauge .1233" thickness and 13 Gauge .0934" inch thickness

6 Hole Perf-O Grip Plank

Width: 12" inches
Length: 12' feet
Carbon Steel Hot Rolled Oiled and Pickled 11 Gauge .1196" inch thickness and 13 gauge .0897" thickness.
Galvanized steel 11 Gauge .1233" thickness and 13 Gauge .0934" inch thickness



PERF-O GRIP PLANK

HADCO
OUR SERVICE - YOUR SUCCESS

Accessories

Bolt Washer Seat

1 Bolt washer seat

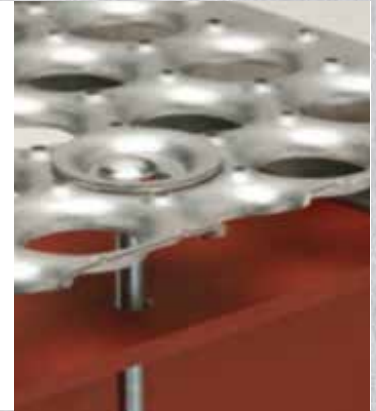
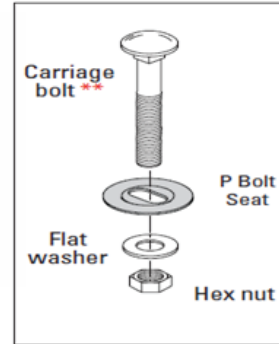
Source Locally

(1) 3/8"-16 Carriage bolt **

(1) 3/8" Flat washer

(1) 3/8"-16 Hex nut

The bolt is used to help provide a secure anchor of the grating to structural supports. The standard bolt seat features oblong holes



Perf-O Grip J-Clip

1 J-Clip and 1 P bolt seat

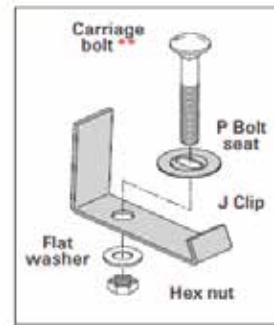
Source locally

(1) 3/8"-16 Carriage bolt **

(1) 3/8" Flat washer

(1) 3/8"-16 Hex nut

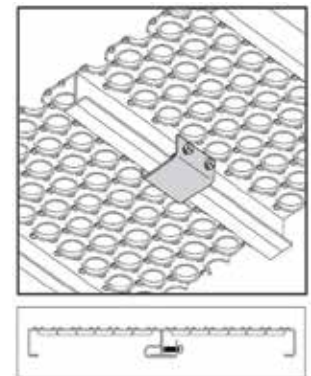
Perf-O Grip™ J-clips fasten the grating securely to the supporting steel without drilling holes.



Perf-O Grip Mid Support Clip with Hardware

1 Clip and 2 Set screws

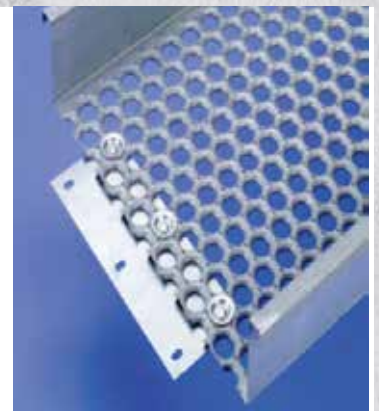
These mid support clips can be used at midspan to increase load carrying capacities of individual channels by fastening several planks together to form an integral section. Mid support clip is manufactured from galvanized steel and includes two set screws.



Perf-O Grip Mid Support Clip with Hardware

1 Clip and 2 Set screws

These mid support clips can be used at midspan to increase load carrying capacities of individual channels by fastening several planks together to form an integral section. Mid support clip is manufactured from galvanized steel and includes two set screws.



PERF-O GRIP PLANK

HADCO
OUR SERVICE - YOUR SUCCESS

What is Steel Perf-O Grip Plank?

Perf-O Grip safety grating is a unique surface of large debossed holes and perforated buttons helps provide maximum slip protection and performance under practically all conditions and in every direction.

Perf-O Grip planking comes in

1. Mill Finish Steel Hot rolled oiled and pickled
2. Galvanized

Perf-O Grip plank applications

Architectural paneling, catwalks, bridge decks, decking, flooring, conveyors, stairs, transformer pit grating, walkways and trench covers.

Advantages

1. Economical to install and use
2. Allow fluids, mud, chips and other debris to drain away.
3. Cushions the impact of footfalls thereby lessening worker fatigue and increasing efficiency.
4. Non-slip surfaces ideal for inside or outside locations where mud, ice, snow, oil and detergents can create hazardous walking conditions.
5. Circular openings (38% of surface area depending on product size) are small enough to catch most falling tools and other dangerous objects.
6. Permits ventilation and lighting flow.
7. Ice accumulation shears easily under normal foot pressure.
8. Open design allows convenient access for cleaning.
9. Easily cleaned with brush, liquid or air spray.
10. Long-lasting, rust-resistant materials and finishes.
11. Standard mill-galvanized finish resists corrosion to provide lasting surfaces.

Versatility

1. Available in a variety of standard widths and channel heights.
2. Formed struts with integral side channels form a plank can support loads with minimum transverse and longitudinal deflection.
3. No rivets or pressure joints to break or loosen.
4. Heavy load-carrying capacity with minimal deflection.
5. Rugged durability with longer-lasting performance.
6. Lightweight yet brawny panels permit substantial reduction in structural steel requirements.

Installation

1. Light, easy-to-handle planks make installation simple and quick.
2. Can be handled by one person.
3. Most sections are rapidly bolted, clamped or welded into place.
4. Easily field cut at virtually any angle, or fabricated to adapt to field conditions.
5. Attachment devices permit fastening to most existing surfaces, allowing for fast installation and disassembly.
6. Plain unpainted steel (HRP&O) is available for those installations requiring paint.

Safety, durability and versatility

1. One-piece construction.
2. No welds or rivets to fail — minimizes need for field fabrication. Special shapes and forming can be accomplished to suit unusual requirements.
3. All surfaces are accessible to brush or spray, making it simple and economical to apply finish coatings.
4. May be used as is, or banded, cut, welded or notched to suit requirements.